

U.S. Census Bureau

Measuring America: People, Places, and Our Economy

LULAC National Convention Phoenix, Arizona

Armando Mendoza and Gerson Vasquez

U.S. Census Bureau

July 17 and 19, 2018

Agenda

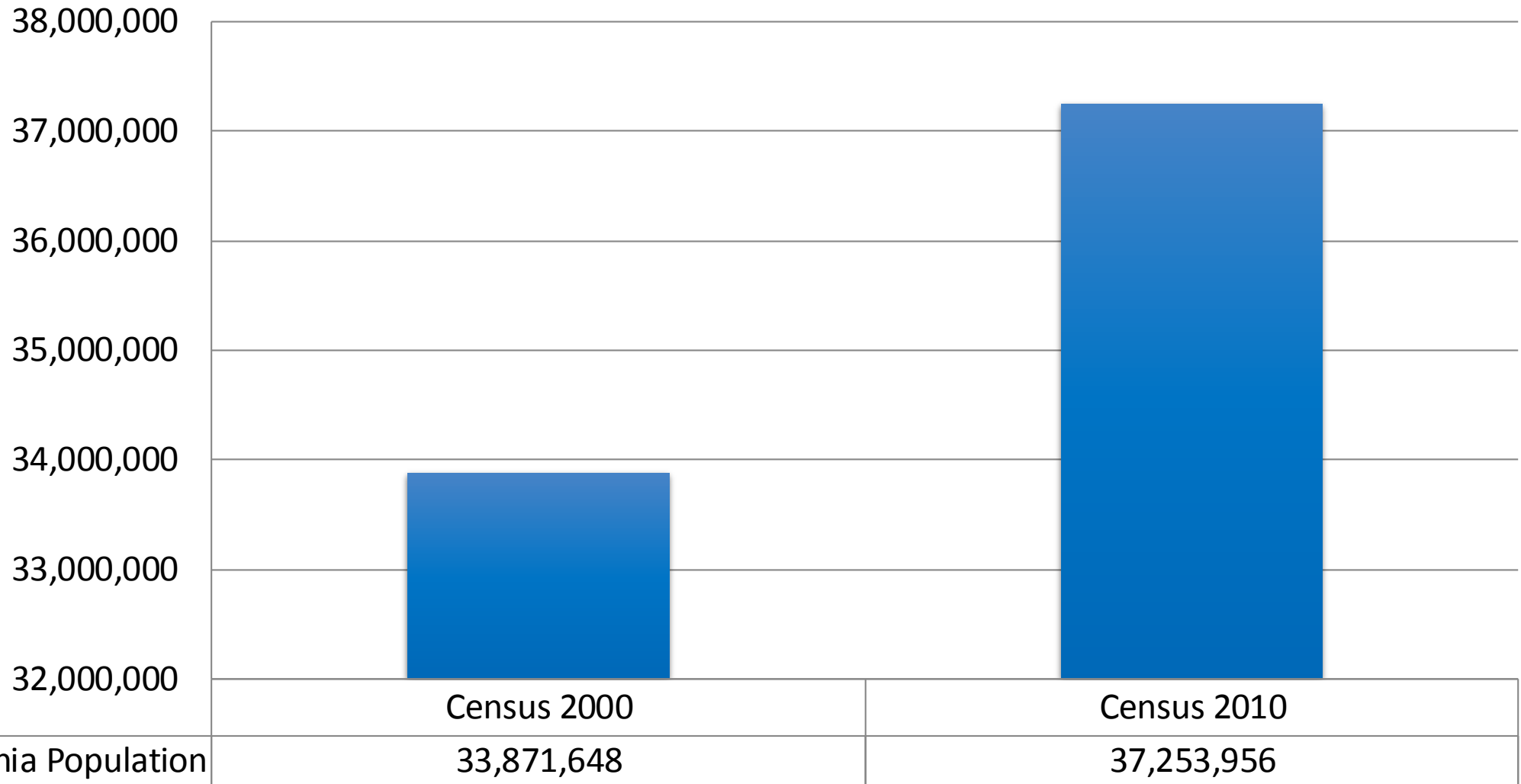
- Importance of Census Bureau Data
- Decennial Census and the American Community Survey (ACS)
- Accessing Census Bureau Data
 - Easy data tools
- Accessing Census Bureau Data
 - Advanced Searching via API
 - Custom Visualizations

Decennial Census

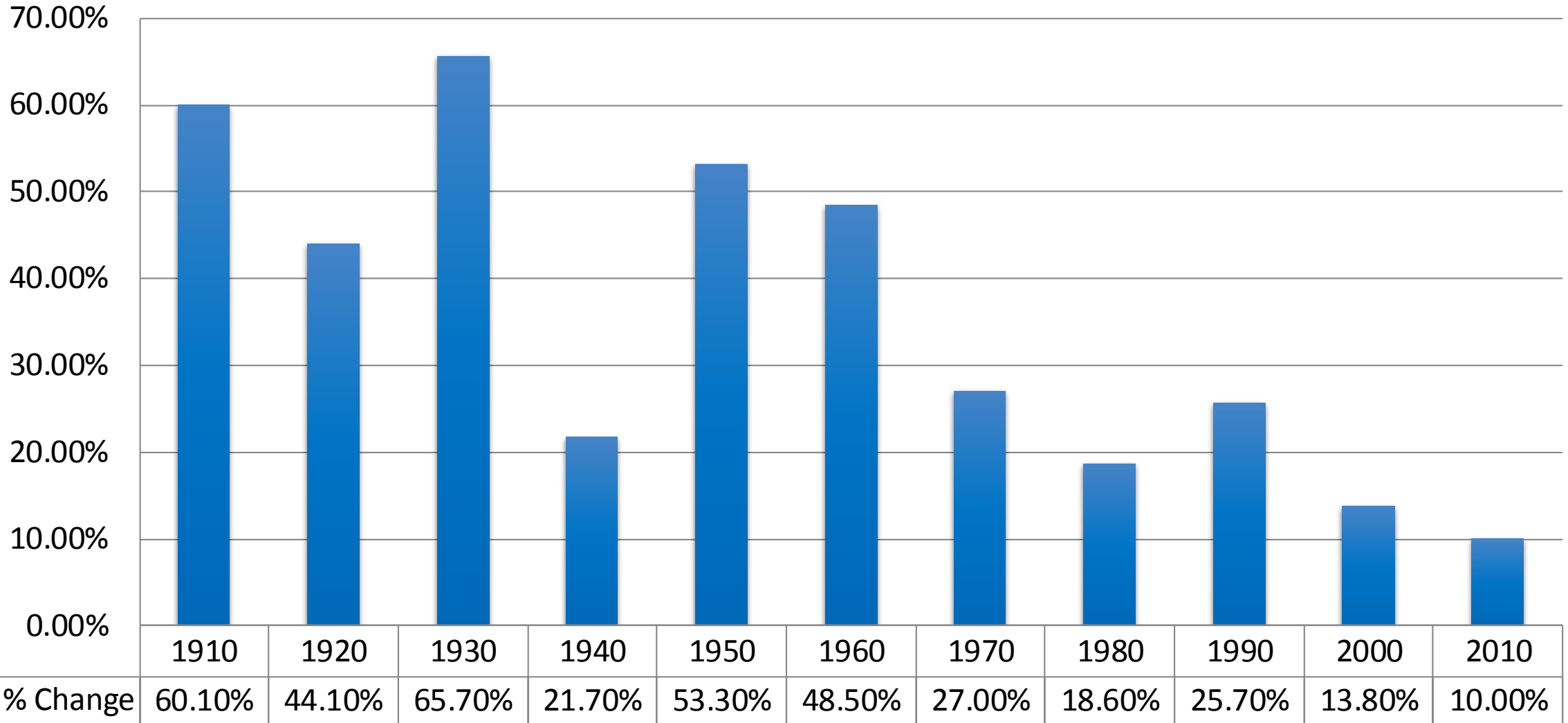
- Constitutional Mandate
 - *Article 1, Section 2*
 - 23 Censuses since 1790
- Congressional Reapportionment
- Redistricting
- Data is used to distribute federal funds



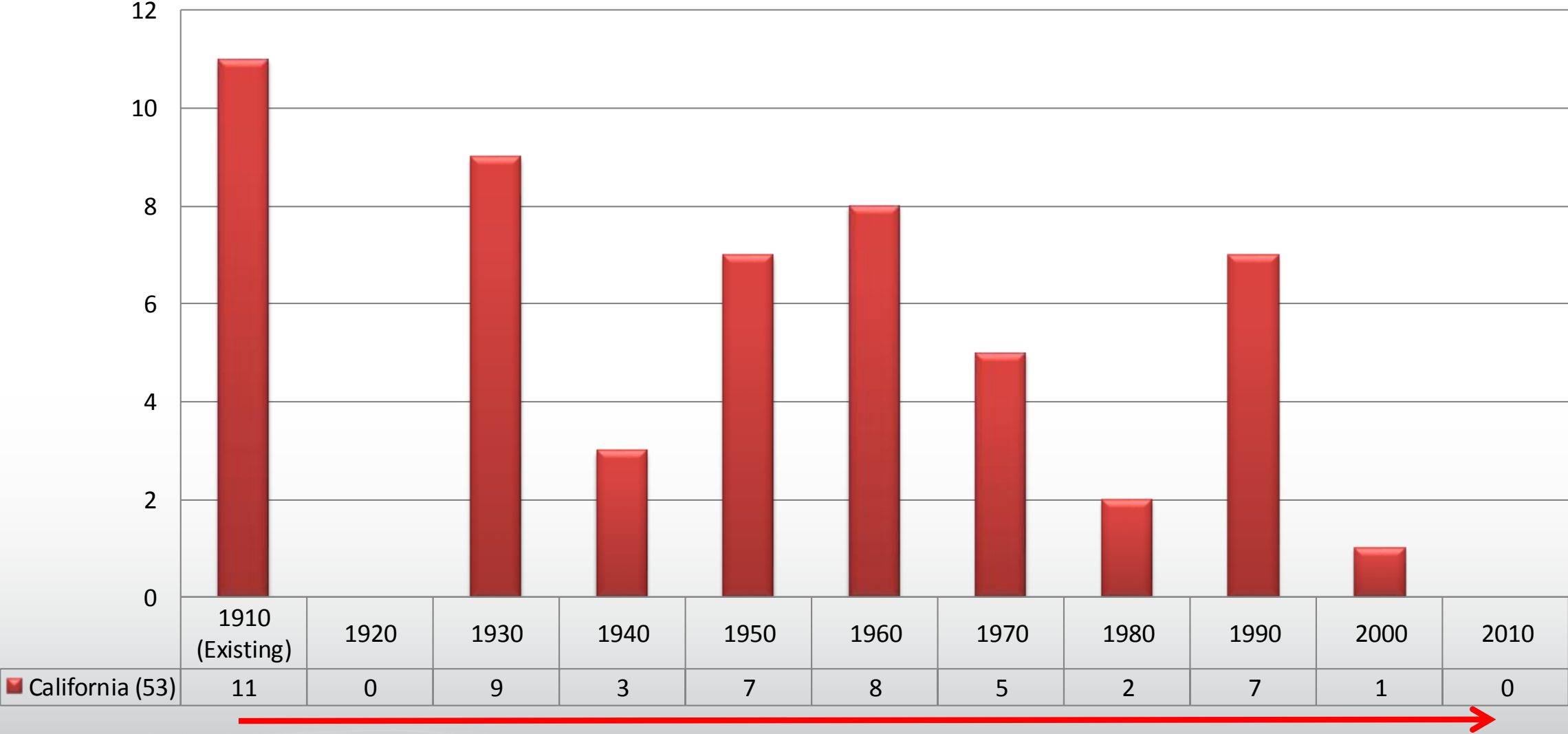
California Population Growth



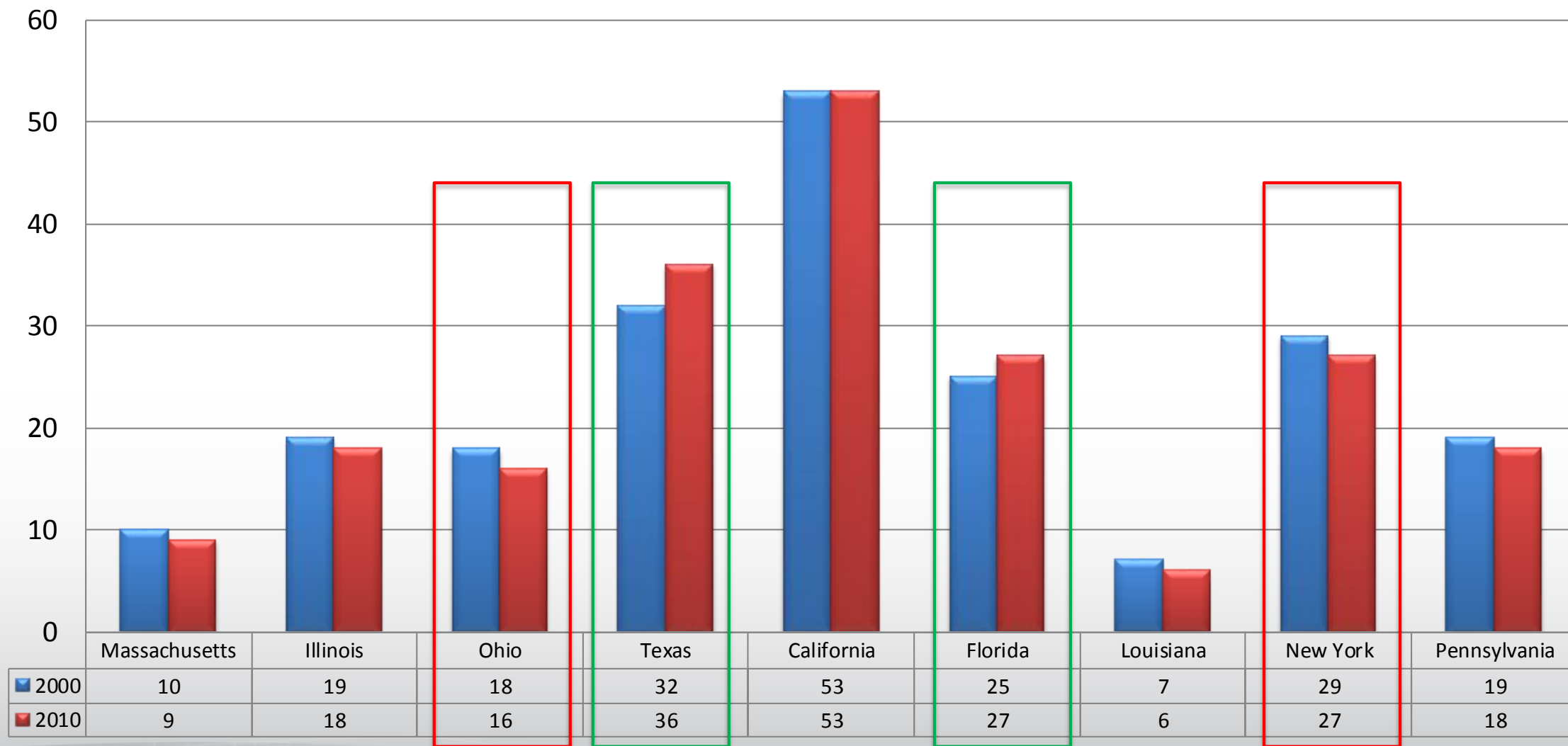
California Resident Population Percent Change



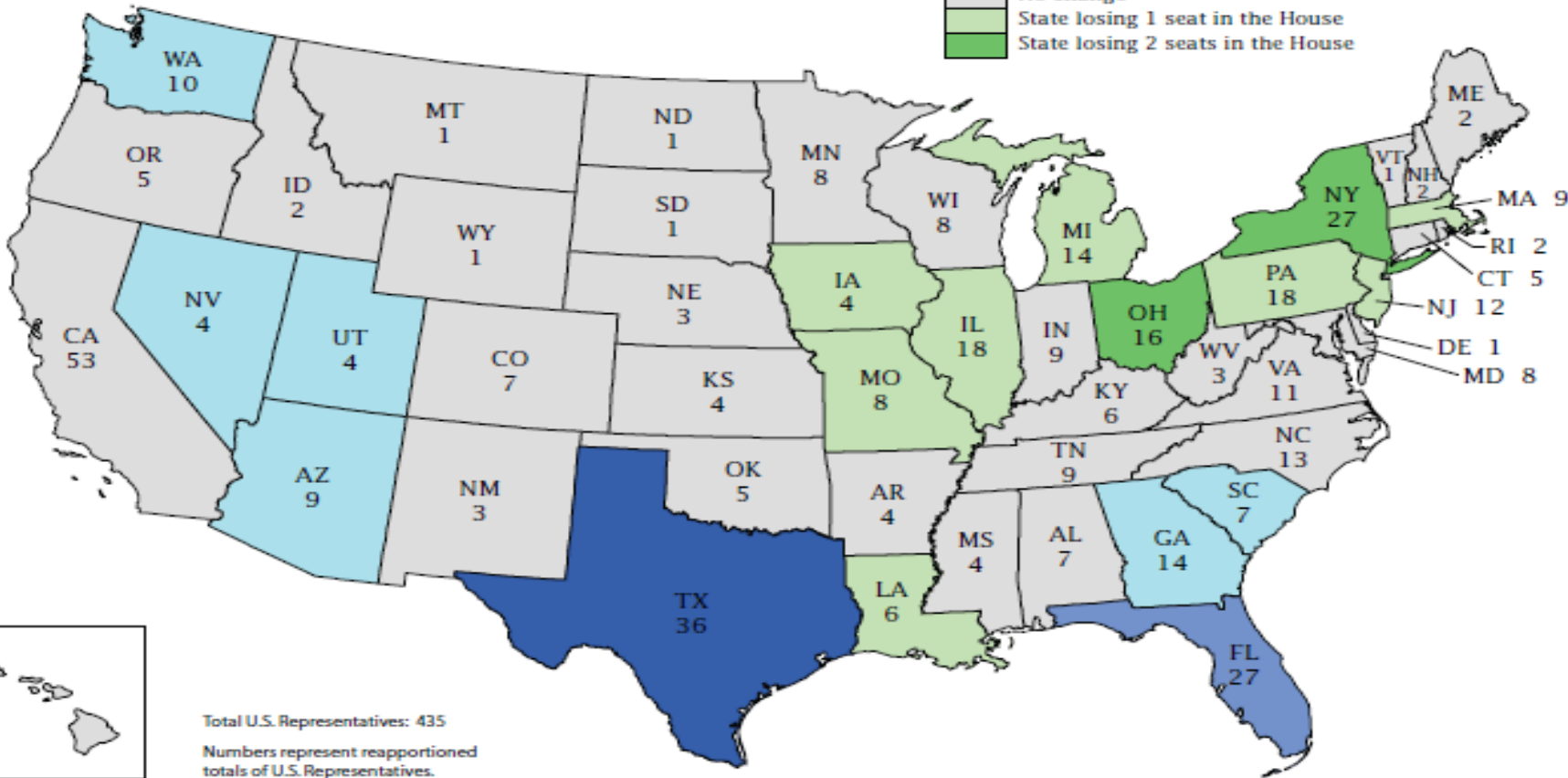
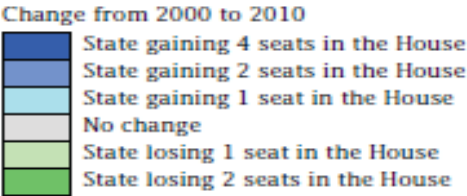
California Congressional Apportionment



Congressional Seats Apportionment



Apportionment of the U.S. House of Representatives Based on the 2010 Census



Total U.S. Representatives: 435
Numbers represent reapportioned totals of U.S. Representatives.

U.S. Department of Commerce

U.S. CENSUS BUREAU
Helping You Make Informed Decisions

Overview

- Importance of Census Bureau Data
- Decennial Census and the American Community Survey (ACS)
- Accessing Census Bureau Data
 - Easy data tools
- Accessing Census Bureau Data
 - Advanced Searching via API
 - Custom Visualizations

American Community Survey History

1940-2000

- Decennial Census: Short Form & Long Form

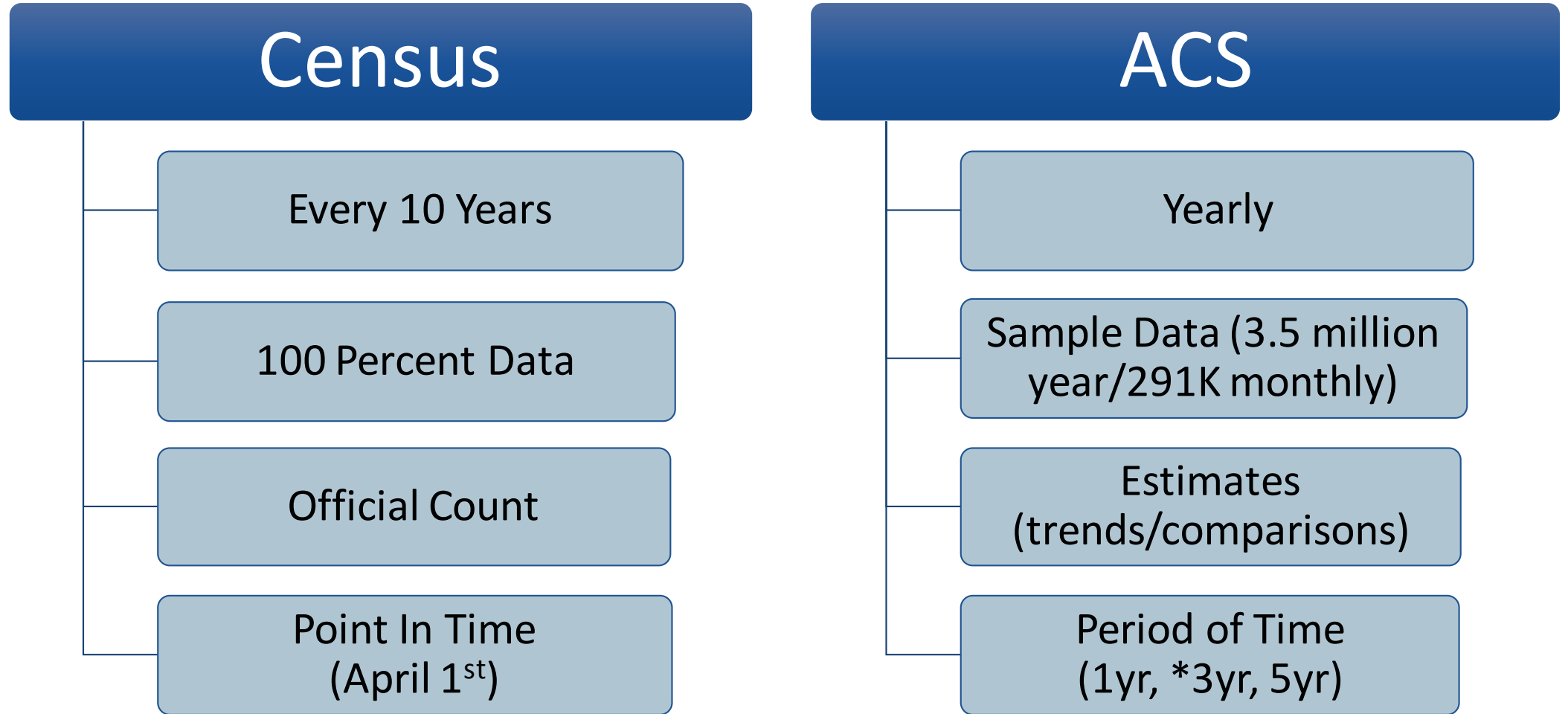
2005

- American Community Survey Replaces Decennial Long Form

2010

- Decennial Census: Short Form Only

Differences Between Decennial Census and ACS



ACS Period Estimates

1-Year Estimates

- Geographies of 65,000 or more

3-Year Estimates

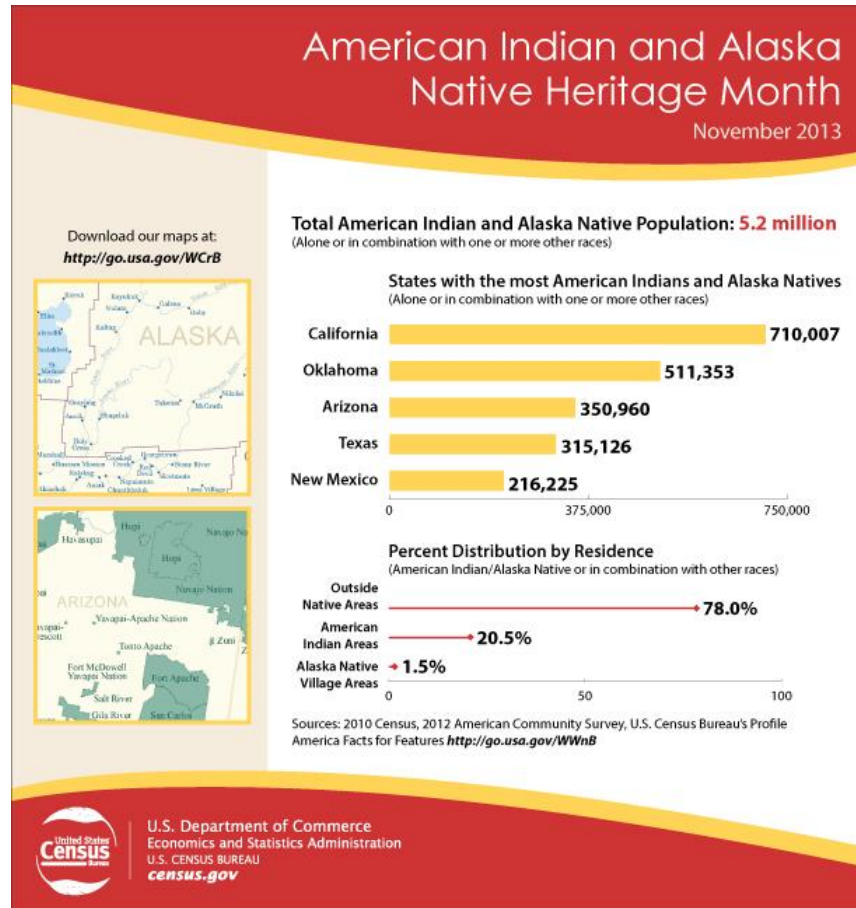
- Geographies of 20,000 or more **discontinued after 2013*

5-Year Estimates

- All geographies

American Community Survey

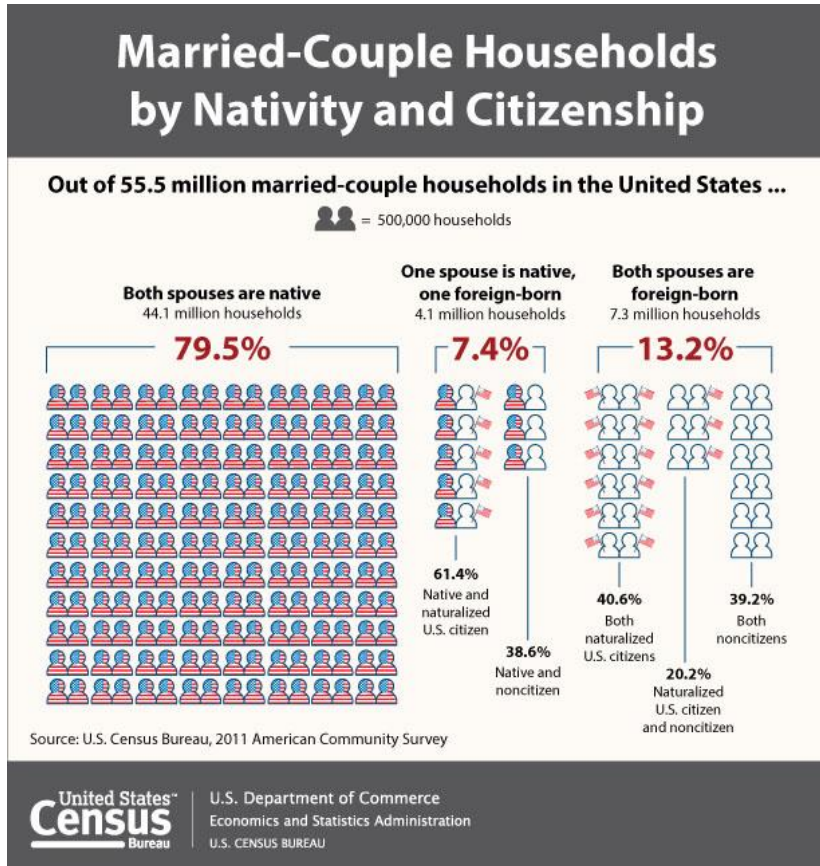
Demographic Characteristics



- Age
- Race
- Sex
- Hispanic Origin

American Community Survey

Social Characteristics



- Education
- Marital Status
- Fertility
- Grandparent/ Caregivers
- Veterans
- Disability Status
- Place of Birth
- Citizenship
- Year of Entry
- Language Spoken at Home
- Ancestry / Tribal Affiliation

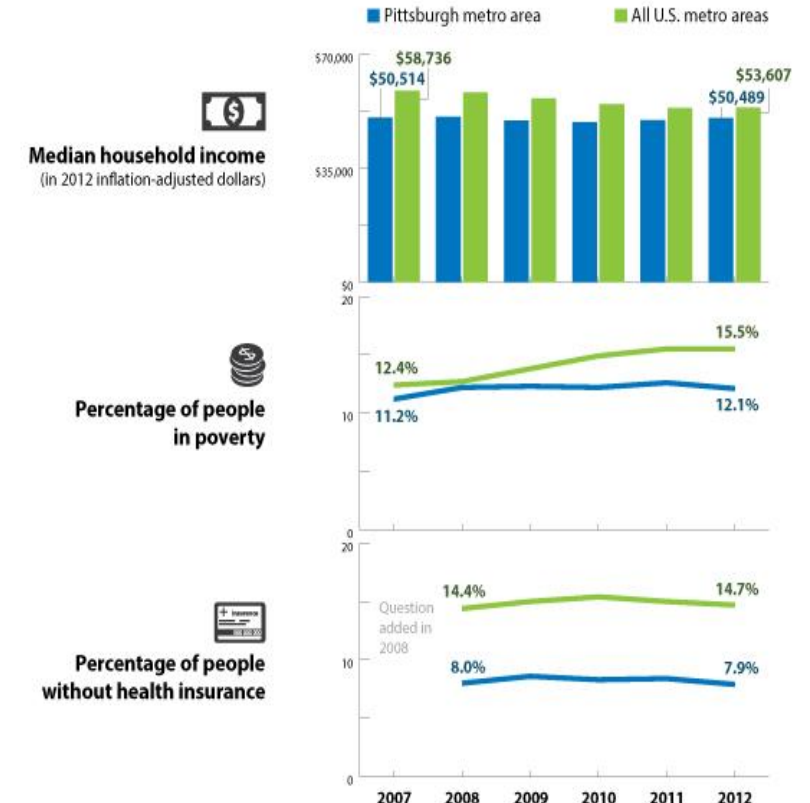
American Community Survey

Economic Characteristics

- Income
 - Social Security Income
 - Retirement Income
- Employment Status
- Occupation
- Industry
- Commuting to Work
- Place of Work
- Health Insurance
 - Medicare
 - Medicaid

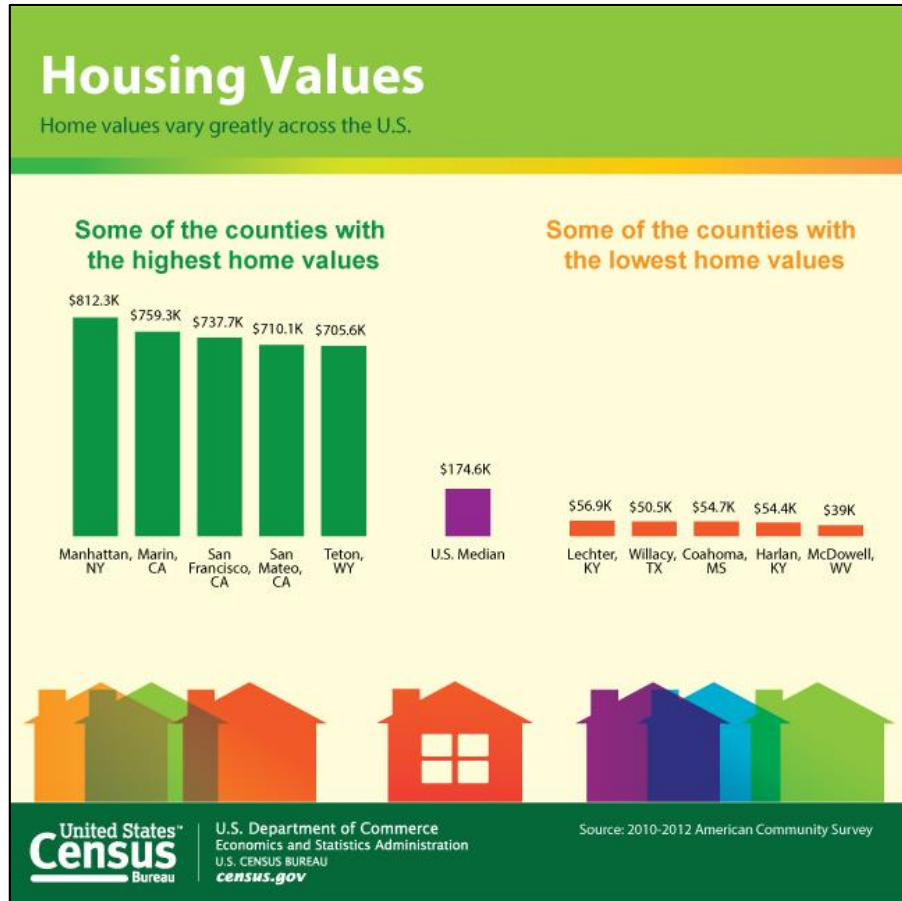
Income, Poverty & Health Insurance

American Community Survey Statistics for **Pittsburgh Metro Area**, 2007–2012



American Community Survey

Housing Characteristics



- Tenure
- Occupancy & Structure
- Housing Value
- Taxes & Insurance
- Utilities
- Mortgage/Monthly Rent

ACS Data Products and Release Schedule

Data Product (next release)	Population Threshold of Statistical Area	Year of Data Release											
		2006	2007	2008	2009	2010	2011	2012	2013	2014	2015	2016	2017
		Year(s) of Data Collection											
1-Year Estimates 09-17-15	65,000 +	2005	2006	2007	2008	2009	2010	2011	2012	2013	2014	2015	2016
3-Year Estimates <i>Discontinued</i>	20,000 +			2005 - 2007	2006 - 2008	2007 - 2009	2008 - 2010	2009 - 2011	2010 - 2012	2011 - 2013	Discontinued>		
5-Year Estimates 12-10-15	All Areas *					2005 - 2009	2006 - 2010	2007 - 2011	2008 - 2012	2009 - 2013	2010 - 2014	2011- 2015	2012- 2016

* All Areas = All legal, administrative, and statistical geographic areas down to the block group level. Zip Code Tabulation Area (ZCTA) estimates first became available in 2012, with the 2007 – 2011 estimates.

Margin of Error (MOE)

- Margin of Error Definition:
A measure of the precision of an estimate at a given level of confidence (90%, 95%, 99%)
 - MOEs at the 90% confidence level for all published ACS estimates
- Confidence Interval Definition:
A range that is expected to contain the population value of the characteristic with a known probability

Overview

- Importance of Census Bureau Data
- Decennial Census and the American Community Survey (ACS)
- Accessing Census Bureau Data
 - Easy data tools
- Accessing Census Bureau Data
 - Advanced Searching via API
 - Custom Visualizations

Contact Information:

Armando Mendoza

Data Dissemination Specialist

Data Dissemination Branch

Customer Liaison and Marketing Services Office

Email: armando.mendoza@census.gov

Telephone: 818.554.3606

Gerson Vasquez

Data Visualization Specialist & Media Relations

Data Dissemination Branch

Customer Liaison and Marketing Services Office

Email: gerson.d.vasquez@census.gov

Telephone: 770.543.9900